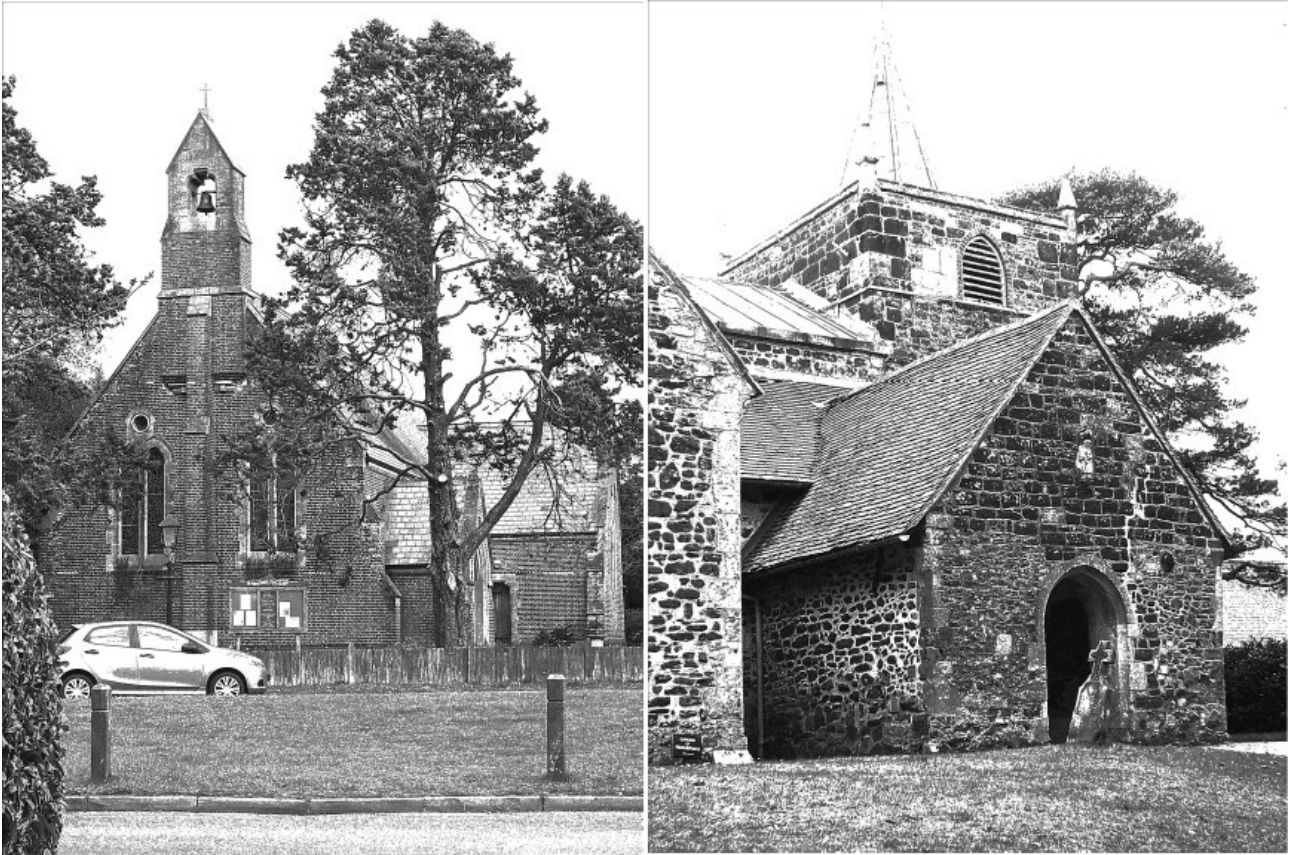


Weddings at St. Luke's, Burton and St. Michael and All Angels, Sopley



If you have decided that you would like to investigate the possibility of having your Wedding Service in one of our Churches or if you are simply looking at different possibilities – welcome! We would love to talk to you about the options open to you.

On the next page you will find details about getting married in Church, but the first thing to say is that we at St. Luke's and St. Michael and All Angels Churches will be delighted to help you through the process. We believe that by choosing to get married in God's house, openly acknowledging His presence and asking for His blessing, your married life together will start in the best possible way.

We value greatly both the connections we have with local couples looking to marry in their local Church and also the new friends we make in welcoming visitors who choose to marry here because of their choice of Reception venue, for example, or maybe because of family history. Whatever your circumstances please contact the Revd Nigel Lacey either by email at nigellacey405@btinternet.com or by telephone on 01202 473834. We are here to help.

WHO IS ALLOWED TO MARRY IN OUR CHURCHES?

For most people this is quite a simple question to answer but there are some legal complications in some cases and there may be an occasional issue from the Church's point-of-view.

If you are both 16 or 17 with your parents' permission to marry or if you are 18 or over and both wish to marry then we can start looking at the details. If you currently live in the Parish (you can check which parish you are in by looking at www.achurchnearyou.com and entering your postcode) - you are entitled to marry in Church (but please see the paragraph below about the remarriage of divorcees). You are also entitled to marry here if you yourself or your immediate family have a connection with the Parish (for example, if you were Baptised in one of our Churches or if your family members have been buried here).

Please see www.yourchurchwedding.org for full details.

If you have no real personal or family connection with the Parish then you need to establish what is called a "Qualifying Connection". This is normally done by attending worship regularly within the Parish for a period of six months before the date of the Wedding. We understand "regularly" to mean at least once a month. Many couples choose to do this so that they can be married by Banns (the simple way, explained later). If you live away from the Parish we will normally arrange to meet after Church on Sunday morning so that you don't need to make separate journeys.

For couples where one or both people are not UK nationals and do not come from an EU country you will need to arrange for a Superintendent Registrar's Certificate but the qualification rules remain the same. You may also need to provide more detailed evidence of identity and nationality.

Finally, if one or both of you are divorced our policy is that we are prepared to remarry you in Church under most circumstances but this will require a conversation with the and a sight of the Divorce Absolute documents.

BANNS AND LICENCES

BANNS

For three weeks in the three months before your Wedding date, during the main service of the Church where you intend to marry and also the Parish Church of your home address, your intention to marry will be read out in Church. Your home Church will give you a certificate to confirm this (called the Banns Certificate – it will cost you £44 in 2020) and you must bring this to the person who is officiating at your Wedding. This gives you the legal right to be married.

COMMON LICENCE

This is issued by the Diocesan Registrar to couples who are unable to marry by Banns. It involves visiting the Registrar (usually in Wichester) and swearing an affidavit together. It will cost you around £180 and you will still need a Qualifying Connection.

ARCHBISHOP'S LICENCE

Forget it! Rarer than hen's teeth, you may read about this but it is granted in very rare circumstances, normally involving a life or death situation.

NON-UK NATIONALS

If you are not an UK national you cannot marry by Banns or by Common Licence. You will need to obtain a Superintendent Registrar's Certificate. This is not a Church issue but in order to help the following web address may be of assistance <https://www.gov.uk/marriage-visa/overview>. You will still then be able to marry in Church with us.

HELPFUL DETAILS

We recommend that you take some time to look together at the following website:- www.yourchurchwedding.org

Here you will find an outline of a "typical" Wedding Service, although it is important to say that there is really no such thing! Every Wedding is unique and we try hard to make sure that the Bride and Groom feel this to be so.

There are many choices to make which help to make the service unique, such as what music to include in the service, how many and which hymns to have (it isn't compulsory to have any!), which readings to include (the only rule is that there must be at least one reading from the Bible) and, in many cases, what prayers you would like to include. Looking at these on the website will help you when we chat about them at our meetings. Some elements are fixed, though, such as the wording of the vows.

We believe that it is very important to build a close relationship with each couple, even though in some cases we are unlikely to meet frequently after the Wedding. It is normal for us to have meetings, in addition to those occasions when we bump into each other as you attend services. At the first meeting we fill in the necessary legal details and discuss the Wedding. We will then meet up to firm up the arrangements for the service. There will then be a rehearsal in Church, probably the evening before the Wedding, just to put your minds at rest regarding what is going to happen and how it will all work. Easy! Nothing to remember or learn – which is important, because we wish you to relax into a meaningful Wedding ceremony.

Please remember – if you want to discuss anything just contact us-

Revd Nigel Lacey

The Vicarage

Preston Lane

Burton

Christchurch

Dorset

BH23 7JU

01202 473834

nigellacey405@btinternet.com

Our church website is at-

www.burtonsopley.com

Wedding Fees 2021

Statutory fees

Wedding service	£463.00
Publication of banns	£46.00
Marriage Certificate	£11.00
Total	£521.00

Church fees

Verger *	£25.00
Organist	£65.00
Total	£90.00

Extras

Bells – St. Michael and All Angels, Sopley only	£140.00
(St. Luke's has some electronic bells which can be used free of charge)	
Choir	£80.00

All fees to be paid not less than 3 weeks before the date of the wedding
Please.

If you would like to pay by BACS the details are-

For St. Luke's, Burton

Account name – PCC of Burton
Account number – 00201844
Sort code – 30-92-02

For St. Michael and All Angels, Sopley

Account name – PCC of Sopley
Account number – 00202735
Sort code – 30-92-02